



8264 Series of Enclosures Made of Aluminum or Stainless Steel

Features:

- *Copper Free Aluminum – High strength, light weight and corrosion resistant.*
- *Stainless Steel – Best material solution for challenging environmental conditions.*
- *Gasketed Flange – “O” ring gasket is located inside the cover bolts.*
- *Flat Cover – Provides space for operator installation.*
- *Rectangular or Round Windows – Can be factory installed to enable viewing of digital read out meters and other devices.*
- *Conduit Openings – Enclosures are designed with a wall thickness suitable for drilling and tapping of conduit openings up to 2" max.*
- *Stainless Steel Hinges – All enclosures are provided with factory installed hinges which allow easy access for inspection, maintenance and system changes.*
- *Mounting Rails – Standard.*
- *Internal Mounting Plate Bosses – They are factory machined to enable field installation of the optional mounting plates.*
- *Optional Finish – Powder Coating.*

EXPLOSION PROOF & DUST IGNITION PROOF ENCLOSURES



CLASSIFICATIONS

NEC & CEC:
Gas Explosion Protection
 Class I, Division 1, Groups B, C & D
 Class I, Zone 1, Groups IIA, IIB & IIB+H₂

Dust Explosion Protection
 Class II, Division 1 Groups E, F & G
 Class III

Environmental Protection
 Type 3, 4, 4X, 7 & 9

CLASSIFIED
 US FILE No. E307783

Enclosure Materials
 8264/6***-3 Copper Free Aluminum
 (Marine Grade)
 8264/6***-2 Stainless Steel 316L

Ambient Temperature
 +50°C (122°F) max.
 -25°C (-13°F) min.

APPLICATIONS

The Series 8264 are Explosion Proof and Dust Ignition Proof enclosures made of Copper Free Aluminum or Stainless Steel 316L. They are suitable for use in hazardous (classified) locations as specified above.

They are designed to contain ordinary location electrical components for Instrumentation, Motor Control and Distribution. There are eight sizes of enclosures and they all come with Stainless Steel cover hinges and mounting rails as standard. Mounting Plates are optional and need to be ordered separately.

They can be customized with drilled and tapped entry openings as well as round and rectangular windows and operators.

Entry and operator openings can be field modified. For details regarding Aluminum Enclosures see pages I9 and I10. For Stainless Steel Enclosures see pages I11 and I12.



Ordering Information

Empty Aluminum Enclosures with Stainless Steel cover hinges and mounting rails.

Catalog Number	External Dimensions L x W x D
8264/6114-3	9.25" x 9.25" x 10.24"; (235 x 235 x 260 mm)
8264/6214-3	14.17" x 9.25" x 10.24"; (360 x 235 x 260 mm)
8264/6224-3	14.17" x 14.17" x 10.24"; (360 x 360 x 260 mm)
8264/6225-3	14.17" x 14.17" x 12.99"; (360 x 360 x 330 mm)
8264/6325-3	18.90" x 14.17" x 12.99"; (480 x 360 x 330 mm)
8264/6335-3	18.90" x 18.90" x 12.99"; (480 x 480 x 330 mm)
8264/6935-3	28.74" x 18.90" x 12.99"; (730 x 480 x 330 mm)
8264/6995-3	28.74" x 28.74" x 12.99"; (730 x 730 x 330 mm)

Ordering Information

Empty Stainless Steel Enclosures with Stainless Steel cover hinges and mounting rails.

Catalog Number	External Dimensions L x W x D
8264/6112-2	9.25" x 9.25" x 10.63"; (235 x 235 x 270 mm)
8264/6212-2	14.17" x 9.25" x 10.63"; (360 x 235 x 270 mm)
8264/6222-2	14.17" x 14.17" x 10.63"; (360 x 360 x 270 mm)
8264/6223-2	14.17" x 14.17" x 13.39"; (360 x 360 x 340 mm)
8264/6323-2	18.90" x 14.17" x 13.39"; (480 x 360 x 340 mm)
8264/6333-2	18.90" x 18.90" x 13.39"; (480 x 480 x 340 mm)
8264/6933-2	28.74" x 18.90" x 13.39"; (730 x 480 x 340 mm)
8264/6993-2	28.74" x 28.74" x 13.39"; (730 x 730 x 340 mm)

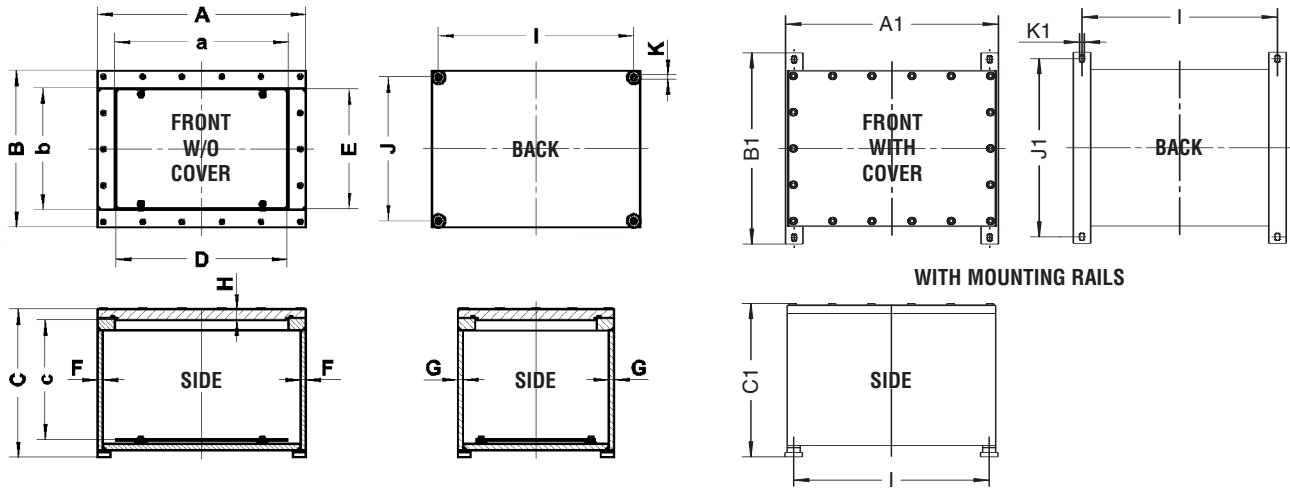
Parts and Accessories

Item	Image	Description	Catalog Number	
Optional Mounting Plates for Aluminum or Stainless Steel Enclosures		enclosure sizes:	8264/611•••	82 649 07 55 0
			8264/621•••	82 649 08 55 0
			8264/622•••	82 649 01 55 0
			8264/632•••	82 649 02 55 0
			8264/633•••	82 649 03 55 0
			8264/693•••	82 649 04 55 0
			8264/699•••	82 649 05 55 0
Fixing Screw Kit			82 648 01 90 6	

Technical Data

DESCRIPTION	
MAX. INTERRUPTING CAPACITY OF INSTALLED COMPONENTS	10 kA RMS Symmetrical Amperes
EXTERNAL AUXILIARY DEVICES (i.e. Push Buttons or Pilot Lights)	Listed for Hazardous Locations USL (NOIV) & CNL (NOIV7)
WINDOW MATERIAL	Borosilicate Glass
ENCLOSURE MATERIAL	Copper Free Aluminum (Marine Grade) or Stainless Steel 316L

ENCLOSURE DIMENSIONS



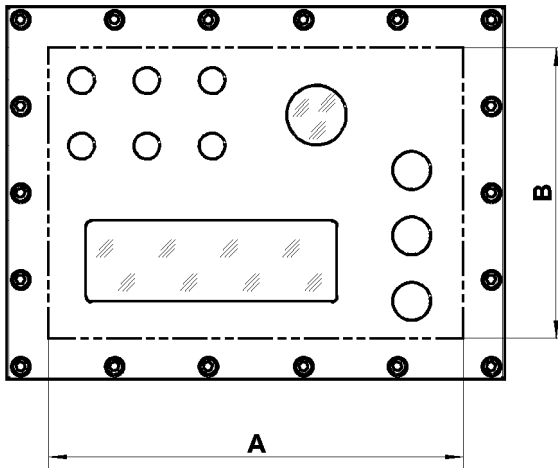
8264/6...-3 Aluminum Enclosure Dimensions in inches (mm)																			
Enclosure Type	External						Mounting Plate		Internal						Mounting				
	A	A1	B	B1	C	C1	D	E	a	b	c*	F	G	H	I	J	J1	K	K1
8264/6114-3	9.25 (235)	11.22 (285)	9.25 (235)	13.86 (352)	10.24 (260)	10.71 (272)	5.98 (152)	5.98 (152)	6.18 (157)	6.18 (157)	7.95 (202)	0.47 (12)	0.47 (12)	0.98 (25)	8.07 (205)	8.07 (205)	11.89 (302)	Standard Thread Size – M12 – 0.98 (25) deep (for optional thread sizes, please contact factory)	Width of elongated hole = 0.70 (18)
8264/6214-3	14.17 (360)	11.22 (285)	9.25 (235)	13.86 (352)	10.24 (260)	10.71 (272)	10.79 (274)	5.98 (152)	11.02 (282)	6.10 (157)	7.95 (202)	0.47 (12)	0.65 (16.5)	0.98 (25)	12.99 (330)	8.07 (205)	11.89 (302)		
8264/6224-3	14.17 (360)	16.14 (410)	14.17 (360)	18.74 (476)	10.24 (260)	10.71 (272)	10.79 (274)	10.79 (274)	11.02 (282)	11.02 (282)	7.95 (202)	0.65 (16.5)	0.65 (16.5)	0.98 (25)	12.99 (330)	12.99 (330)	16.77 (426)		
8264/6225-3	14.17 (360)	16.14 (410)	14.17 (360)	18.74 (476)	12.99 (330)	13.46 (342)	10.79 (274)	10.79 (274)	11.02 (282)	11.02 (282)	10.83 (272)	0.65 (16.5)	0.65 (16.5)	0.98 (25)	12.99 (330)	12.99 (330)	16.77 (426)		
8264/6325-3	18.90 (480)	16.14 (410)	14.17 (360)	18.74 (476)	12.99 (330)	13.46 (342)	15.51 (394)	10.79 (274)	15.75 (402)	11.02 (282)	10.24 (260)	0.65 (16.5)	0.65 (16.5)	1.01 (25.6)	17.72 (450)	12.99 (330)	16.77 (426)		
8264/6335-3	18.90 (480)	21.26 (540)	18.90 (480)	23.23 (590)	12.99 (330)	13.46 (342)	15.51 (394)	15.51 (394)	15.83 (402)	15.83 (402)	10.16 (258)	0.65 (16.5)	0.65 (16.5)	1.00** (25.4)	17.72 (450)	17.72 (450)	21.50 (546)		
8264/6935-3	28.74 (730)	31.10 (790)	18.90 (480)	23.23 (590)	12.99 (330)	13.46 (342)	24.80 (644)	15.51 (394)	25.59 (652)	15.83 (402)	8.66 (242)	0.65 (16.5)	0.85 (21.5)	1.58 (40.3)	27.56 (700)	17.72 (450)	21.50 (546)		
8264/6995-3	28.74 (730)	31.10 (790)	28.74 (730)	33.31 (846)	12.99 (330)	13.46 (342)	24.80 (630)	24.80 (630)	25.20 (640)	25.20 (640)	9.84 (238)	0.85 (21.5)	0.85 (21.5)	1.58 (40.3)	27.56 (700)	27.56 (700)	31.34 (796)		

* For covers with window: c = c – 0.88 (20) ** For covers with windows: H = 1.59 (40.3) and c = c – 1.38 (35)

8264/6...-2 Stainless Steel Enclosure Dimensions in inches (mm)																			
Enclosure Type	External						Mounting Plate		Internal						Mounting				
	A	A1	B	B1	C	C1	D	E	a	b	c*	F	G	H	I	J	J1	K	K1
8264/6112-2	9.25 (235)	11.22 (285)	9.25 (235)	13.86 (352)	10.63 (270)	11.10 (282)	5.98 (152)	5.98 (152)	6.10 (155)	6.10 (155)	8.07 (207)	0.47 (12)	0.47 (12)	0.98 (25)	8.07 (205)	8.07 (205)	11.89 (302)	Standard Thread Size – M12 – 0.98 (25) deep (for optional thread sizes, please contact factory)	Width of elongated hole = 0.70 (18)
8264/6212-2	14.17 (360)	11.22 (285)	9.25 (235)	13.86 (352)	10.63 (270)	11.10 (282)	10.79 (274)	5.98 (152)	11.02 (280)	6.10 (155)	8.07 (207)	0.47 (12)	0.47 (12)	0.98 (25)	12.99 (330)	8.07 (205)	11.89 (302)		
8264/6222-2	14.17 (360)	16.14 (410)	14.17 (360)	18.74 (476)	10.63 (270)	11.10 (282)	10.79 (274)	10.79 (274)	11.02 (280)	11.02 (280)	8.07 (204)	0.47 (12)	0.47 (12)	0.98 (25)	12.99 (330)	12.99 (330)	16.77 (426)		
8264/6223-2	14.17 (360)	16.14 (410)	14.17 (360)	18.74 (476)	13.39 (340)	13.86 (352)	10.79 (274)	10.79 (274)	11.02 (280)	11.02 (280)	10.83 (274)	0.47 (12)	0.47 (12)	0.98 (25)	12.99 (330)	12.99 (330)	16.77 (426)		
8264/6323-2	18.90 (480)	16.14 (410)	14.17 (360)	18.74 (476)	13.39 (340)	13.86 (352)	15.51 (394)	10.79 (274)	15.75 (400)	11.02 (280)	10.83 (274)	0.47 (12)	0.47 (12)	0.98 (25)	17.72 (450)	12.99 (330)	16.77 (426)		
8264/6333-2	18.90 (480)	21.26 (540)	18.90 (480)	23.23 (590)	13.39 (340)	14.57 (370)	15.51 (394)	15.51 (394)	15.75 (400)	15.75 (400)	10.63 (269)	0.47 (12)	0.47 (12)	0.99 (25.2)	17.72 (450)	17.72 (450)	21.50 (546)		
8264/6933-2	28.74 (730)	31.10 (790)	18.90 (480)	23.23 (590)	13.39 (340)	14.57 (370)	24.80 (644)	15.51 (394)	25.59 (650)	15.75 (400)	10.83 (273)	0.47 (12)	0.47 (12)	0.98 (25)	27.56 (700)	17.72 (450)	21.50 (546)		
8264/6993-2	28.74 (730)	31.10 (790)	28.74 (730)	33.31 (846)	13.39 (340)	14.57 (370)	24.80 (630)	24.80 (630)	25.59 (650)	25.59 (650)	10.63 (268)	0.47 (12)	0.47 (12)	0.98 (25)	27.56 (700)	27.56 (700)	31.34 (796)		

* For covers with window: c = c – 0.88 (20)

Cover – Aluminum, Area for Operator Installation.



8264/6...-3 Aluminum Enclosure Cover - Area for Operator Installation in inches (mm)			
Cover for Enclosure Type	Length	Width	Max. Number of Operators
	A	B	3/4"-14 NPSM*
8264/6114-3	5.43 (138)	5.43 (138)	4
8264/6214-3	10.24 (260)	5.43 (138)	8
8264/6224-3	10.24 (260)	10.24 (260)	16
8264/6225-3	10.24 (260)	10.24 (260)	16
8264/6325-3	14.96 (380)	10.24 (260)	24
8264/6335-3	14.96 (380)	14.96 (380)	36
8264/6935-3	24.80 (630)	14.96 (380)	54
8264/6995-3	24.80 (630)	24.80 (630)	81

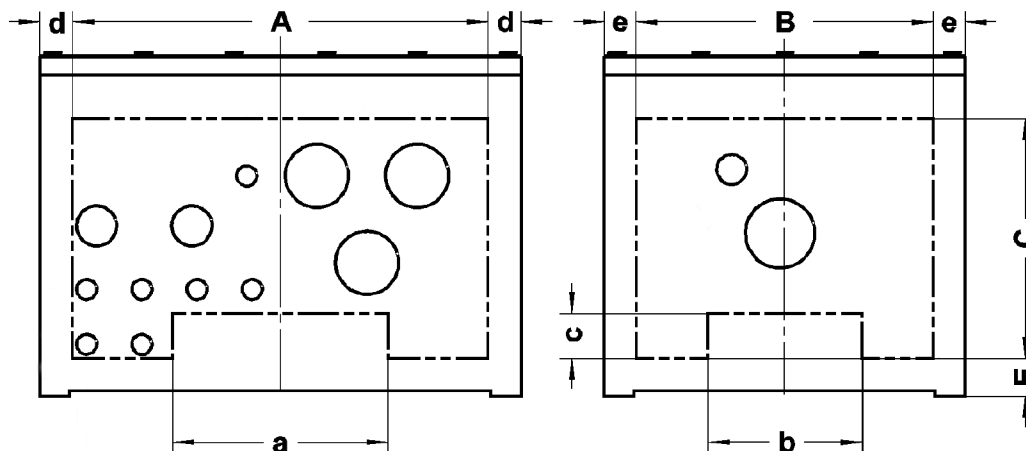
* Optional metric thread sizes can be used: M16 x 1.5; M20 x 1.5; M25 x 1.5.

8264/6...-3 Aluminum Enclosure Cover - Maximum Number of Windows and Sizes								
Cover for Enclosure Type	Round / Viewing Diameter in inches (mm)				Rectangular / Viewing Area in inches (mm)			
	2.17 (55)	2.56 (65)	3.54 (90)	5.51 (140)	2.28 x 5.59 (58 x 142)	3.86 x 5.59 (98 x 142)	5.63 x 9.21 (143 x 234)	7.87 x 11.81 (200 x 300)
8264/6114-3	1	N/A	N/A	N/A	N/A	N/A	N/A	N/A
8264/6214-3	1	N/A	N/A	N/A	1	N/A	N/A	N/A
8264/6224-3	1	1	1	1	1	1	N/A	N/A
8264/6225-3	1	1	1	1	1	1	N/A	N/A
8264/6325-3	2	2	2	1	2	1	1	1
8264/6335-3	4	4	4	1	2	2	1	1
8264/6935-3	6	4	2	1	1	1	N/A	N/A
8264/6995-3	6	4	2	1	1	1	N/A	N/A

For combinations of operators and windows together, please consult factory.

EXPLOSION PROOF & DUST IGNITION PROOF ENCLOSURES

Body – Aluminum, Area for Entry Installation.



8264/6...-3 Aluminum Enclosure Body – Area for Entry Installation in inches (mm)									
Enclosure Type	Width		Height	Height over Mounting	Section of internal reinforcements			Distance to Side Wall	
	A	B	C	E	a	b	c	d	e
8264/6114-3	7.48 (190)	7.48 (190)	6.38 (162)	1.34 (34)	–	–	–	0.89 (22.5)	0.89 (22.5)
8264/6214-3	12.44 (316)	7.17 (182)	6.38 (162)	1.34 (34)	–	–	–	0.87 (22)	1.04 (26.5)
8264/6224-3	11.97 (304)	11.97 (304)	6.38 (162)	1.34 (34)	–	–	–	1.10 (28)	1.10 (28)
8264/6225-3	11.34 (288)	11.34 (288)	9.13 (232)	1.34 (34)	–	–	–	1.42 (36)	1.42 (36)
8264/6325-3	16.14 (410)	11.41 (290)	8.27 (210)	1.77 (45)	9.06 (230)	4.72 (120)	1.97 (50)	1.38 (35)	1.38 (35)
8264/6335-3	16.54 (420)	16.54 (420)	6.46 (164)	3.62 (92)	–	–	–	1.18 (30)	1.18 (30)
8264/6935-3	25.59 (650)	15.4 (390)	5.83 (148)	3.62 (92)	–	–	–	1.57 (40)	1.77 (45)
8264/6995-3	25.59 (650)	25.59 (650)	6.22 (158)	3.23 (82)	6.30 (160)	6.30 (160)	2.44 (62)	1.57 (40)	1.57 (40)

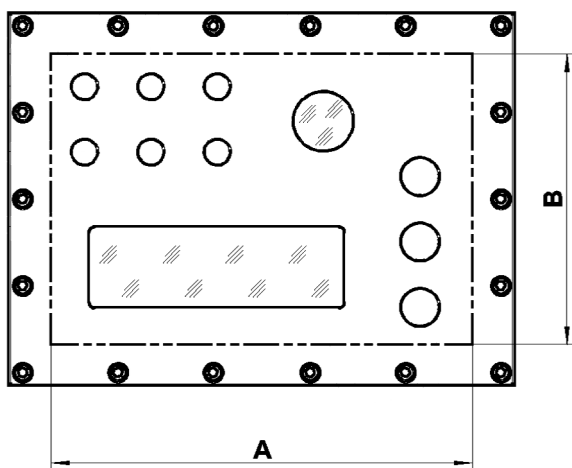
For minimum distance between entries contact factory. For maximum numbers of Entries see table below.

8264/6...-3 Aluminum Enclosure Body - Maximum Number of Entries per Side Wall and in Total for all Sides																
Enclosure Type	Wall Side	Entry Sizes														
		M16 x 1.5		1/2"-NPT or M20 x 1.5		3/4"-NPT* or M25 x 1.5		1"-NPT or M32 x 1.5		1-1/4"-NPT or M40 x 1.5		1-1/2"-NPT or M50 x 1.5		2"-NPT or M63 x 1.5		
		per side	max. total	per side	max. total	per side	max. total	per max.	max. total	per side	max. total	per side	max. total	per side	max. total	
8264/6114-3	all sides	20	80	20	59	14	37	9	24	6	15	4	10	2	6	
8264/6214-3	short side	18	102	18	73	14	45	9	29	6	18	4	13	2	8	
	long side	33		33		22		15		8		6		4		
8264/6224-3	all sides	33	132	33	87	22	54	15	35	8	21	6	15	4	9	
8264/6225-3	all sides	42	152	42	87	25	54	14	35	9	21	5	15	3	9	
8264/6325-3	short side	32	152	32	96	19	60	10	38	6	24	5	17	3	10	
	long side	44		44		25		14		8		6		4		
8264/6335-3	all sides	40	138	40	79	24	49	12	31	8	19	5	14	3	8	
8264/6935-3	short side	36	192	36	119	21	74	10	47	8	30	4	21	3	13	
	long side	60		60		36		18		14		7		5		
8264/6995-3	all sides	54	216	54	159	32	99	15	60	13	40	7	28	5	17	

For combinations of operators and windows together, please consult factory.

* Optional thread size 3/4" - 14 NPSM permitted.

Cover – Stainless Steel, Area for Operator Installation.



8264/6...-2 Stainless Steel Enclosure Cover - Area for Operator Installation in inches (mm)			
Cover for Enclosure Type	Length	Width	Max. Number of Operators 3/4"-14 NPSM*
	A	B	
8264/6112-2	5.43 (138)	5.43 (138)	4
8264/6212-2	10.24 (260)	5.43 (138)	8
8264/6222-2	10.24 (260)	10.24 (260)	16
8264/6223-2	10.24 (260)	10.24 (260)	16
8264/6323-2	14.96 (380)	10.24 (260)	24
8264/6333-2	14.96 (380)	14.96 (380)	36
8264/6933-2	24.80 (630)	14.96 (380)	54
8264/6993-2	24.80 (630)	24.80 (630)	81

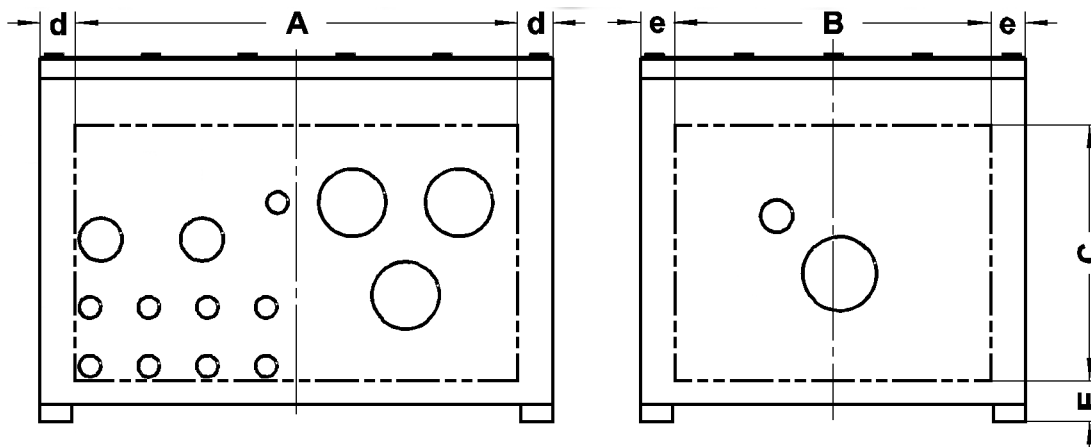
* Optional metric thread sizes can be used: M16 x 1.5; M20 x 1.5; M25 x 1.5

8264/6...-2 Stainless Steel Enclosure Cover - Maximum Number of Windows and Sizes									
Cover for Enclosure Type	Round / Viewing Diameter in inches (mm)				Rectangular / Viewing Area in inches (mm)				
	2.17 (55)	2.56 (65)	3.54 (90)	5.51 (140)	2.28 x 5.59 (58 x 142)	3.86 x 5.59 (98 x 142)	5.63 x 9.21 (143 x 234)	7.87 x 11.81 (200 x 300)	9.21 x 12.52 (234 x 318)
8264/6112-2	1	N/A	N/A	N/A	N/A	N/A	N/A	N/A	N/A
8264/6212-2	1	N/A	N/A	N/A	1	N/A	N/A	N/A	N/A
8264/6222-2	1	1	1	1	1	1	N/A	N/A	N/A
8264/6223-2	1	1	1	1	1	1	N/A	N/A	N/A
8264/6323-2	2	2	2	1	2	1	1	1	N/A
8264/6333-2	4	4	4	1	2	2	1	1	N/A
8264/6933-2	6	4	2	1	1	1	1	1	1
8264/6993-2*	6	4	2	1	1	1	1	1	1

For combinations of operators and windows together, please consult factory.

EXPLOSION PROOF & DUST IGNITION PROOF ENCLOSURES

Body – Stainless Steel, Area for Entry Installation.



8264/6...-2 Stainless Steel Enclosure Body – Area for Entry Installation in inches (mm)						
Enclosure Type	Width		Height	Height over Mounting	Distance to Side Wall	
	A	B	C	E	d	e
8264/6112-2	7.09 (180)	7.09 (180)	6.61 (168)	1.65 (42)	1.08 (27.5)	1.08 (27.5)
8264/6212-2	12.05 (306)	7.09 (180)	6.61 (168)	1.65 (42)	1.06 (27)	1.08 (27.5)
8264/6222-2	12.05 (306)	12.05 (306)	6.50 (165)	1.77 (45)	1.06 (27)	1.06 (27)
8264/6223-2	12.05 (306)	12.05 (306)	9.25 (235)	1.77 (45)	1.06 (27)	1.06 (27)
8264/6323-2	17.32 (440)	12.05 (306)	9.25 (235)	1.77 (45)	0.79 (20)	1.06 (27)
8264/6333-2	16.77 (426)	16.77 (426)	9.06 (230)	1.97 (50)	1.06 (27)	1.06 (27)
8264/6933-2	27.17 (690)	16.77 (426)	9.25 (235)	1.77 (45)	0.79 (20)	1.06 (27)
8264/6993-2	26.61 (676)	26.61 (676)	9.06 (230)	1.97 (50)	1.06 (27)	1.06 (27)

For minimum distance between entries contact factory. For maximum numbers of Entries see table below.

8264/6...-2 Stainless Steel Enclosure Body - Maximum Number of Entries per Side Wall and in Total for all Sides															
Enclosure Type	Wall Side	Entry Size													
		M16 x 1.5		1/2"-NPT or M20 x 1.5		3/4"-NPT* or M25 x 1.5		1"-NPT or M32 x 1.5		1-1/4"-NPT or M40 x 1.5		1-1/2"-NPT or M50 x 1.5		2"-NPT or M63 x 1.5	
		per side	max. total	per side	max. total	per side	max. total	per max.	max. total	per side	max. total	per side	max. total	per side	max. total
8264/6112-2	all sides	20	80	20	59	12	37	9	24	5	15	4	10	2	6
8264/6212-2	short side	20	110	20	77	12	48	9	31	5	19	4	13	2	8
	long side	35		35		22		15		8		6		4	
8264/6222-2	all sides	35	140	35	95	22	59	15	38	8	24	6	17	4	10
8264/6223-2	all sides	42	168	42	142	28	89	16	57	8	32	6	24	4	15
8264/6323-2	short side	42	204	42	185	28	115	16	74	8	44	6	28	4	20
	long side	60		60		38		22		14		8		6	
8264/6333-2	all sides	60	240	60	221	38	138	22	88	12	48	8	32	5	20
8264/6933-2	short side	60	312	60	293	38	183	22	116	12	66	8	40	6	28
	long side	96		96		60		36		21		12		8	
8264/6993-2	all sides	96	384	96	359	60	224	36	144	21	84	12	48	8	32

For combinations of operators and windows together, please consult factory.

* Optional thread size 3/4" - 14 NPSM permitted.

